

## RESOLUTION NO. 2004-296

### A RESOLUTION OF THE CITY COUNCIL OF THE CITY OF ELK GROVE APPROVING AN APPEAL OF THE PLANNING COMMISSION DECISION FOR SPORT CHALET BUILDING SIGNAGE

**WHEREAS**, Sport Chalet Appeal, represented by Signage Solutions (hereinafter referred to as Applicant), filed an application with the City of Elk Grove (hereinafter referred to as City) for the Sport Chalet Appeal of the Planning Commission denial of proposed building signage (Assessor's Parcel Number 116-0041-002); and

**WHEREAS**, the Planning Commission considered the applicant's request on October 28, 2004 and denied the appeal; and

**WHEREAS**, the City Council is the appropriate authority to hear and take action on this project; and

**NOW, THEREFORE, BE IT RESOLVED** that the City Council of the City of Elk Grove hereby approves building signage consisting of internally illuminated channel letters, an internally illuminated sun, as well as internally illuminated linear roof line signage that extends the entire length of the roof as shown in Exhibit A and based on the following findings:

#### **ELK GROVE ZONING CODE**

Finding: Proposed Sport Chalet signage complies with Section 335-20(a)(1)(aa) of the Zoning Code, which indicates that building-mounted signage for buildings located more than 50 feet away from the public right-of-way is allowed at a ratio of 3 square feet of signage per foot of building frontage.

Evidence: Per Code section 335-20(a)(1)(aa), the Sport Chalet building is allowed 630 square feet of signage because it is over 50 feet from the public right-of-way and has a store front length of 210 feet. Proposed signage consists of channel letters, linear roof line signage, and a sun, which encompass approximately 170 square feet when calculated individually. Due to the significant setback of the Sport Chalet building from Bond Road, it is appropriate in this instance for each feature to be calculated as separately contributing to the overall sign square footage. While the individual sign components are within the allowable square footage, the overall sign exceeds the allowable square footage and therefore, no additional signage will be allowed.

#### **DESIGN REVIEW**

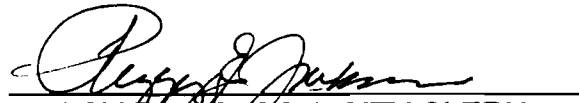
Finding: The proposed signage is consistent with the previously approved Design Review for the Elk Grove Marketplace.

Evidence: The approved Sport Chalet building elevation included visual representation of the proposed channel letters and the sun signage. Although the linear roof line signage was not shown, it is considered to be in substantial compliance with the approved Design Review. Therefore, the entire proposed signage is consistent with the approved Design Review for Elk Grove Marketplace.

**PASSED AND ADOPTED** by the City Council of the City of Elk Grove this 1<sup>st</sup> day of December 2004.

  
SOPHIA SCHERMAN, MAYOR of the  
CITY OF ELK GROVE

ATTEST:

  
PEGGY E. JACKSON, CITY CLERK

APPROVED AS TO FORM:


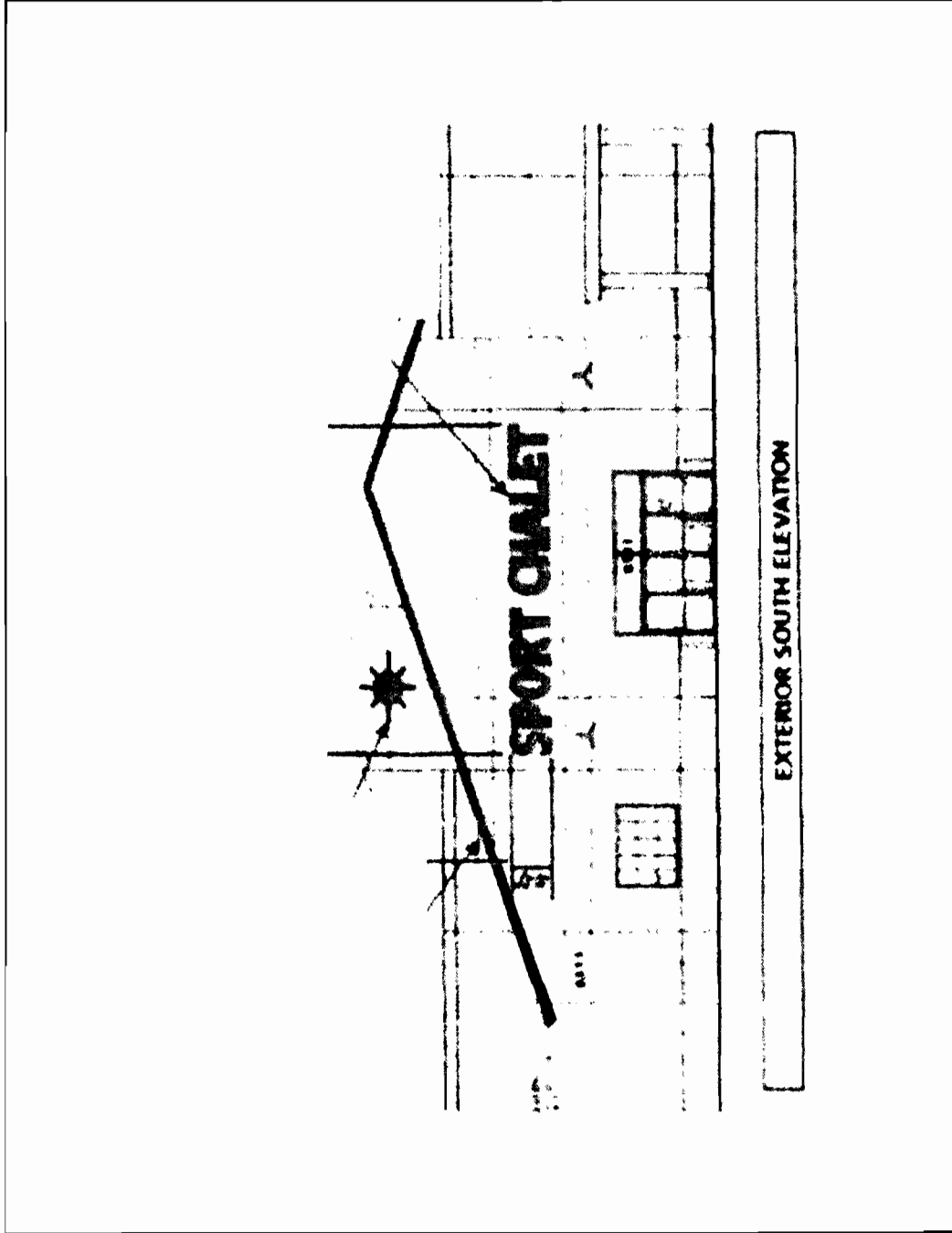
  
ANTHONY B. MANZANETTI,  
CITY ATTORNEY

EXHIBIT A



**CERTIFICATION**  
**ELK GROVE CITY COUNCIL RESOLUTION NO. 2004-296**

STATE OF CALIFORNIA        )  
COUNTY OF SACRAMENTO    )        ss  
CITY OF ELK GROVE         )

*I, Peggy E. Jackson, City Clerk of the City of Elk Grove, California, do hereby certify that the foregoing resolution was duly introduced, approved, and adopted by the City Council of the City of Elk Grove at a regular meeting of said Council held on the 1<sup>st</sup> day of December 2004 by the following vote:*

**AYES 3:        COUNCILMEMBERS: Scherman, Cooper, Leary**

**NOES 2:       COUNCILMEMBERS: Briggs, Soares**

**ABSTAIN 0: COUNCILMEMBERS:**

**ABSENT 0: COUNCILMEMBERS:**



A handwritten signature in cursive script, appearing to read 'Peggy E. Jackson', written in black ink.

---

**Peggy E. Jackson, City Clerk**  
**City of Elk Grove, California**